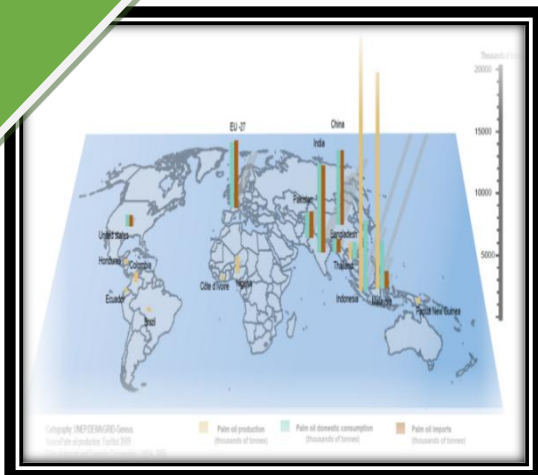


COMPANY PROFILE



BYRU INTERNATIONAL (M) BERHAD



“A World of Solutions for your Growing Needs....”

Malaysia office (HQ) : **BYRU INTERNATIONAL MALAYSIA BERHAD**

Address : No. 45-2, Jalan Equine 10F, Equine Park
 Bandar Putra Permai
 Seri Kembangan, 43300
 Selangor Darul Ehsan

Telephone : +603-8958 0666 +603 8958 0809

Fax : +603-8940 7755 +603 8957 0908

E-Mail : admin@byru.asia

Website : www.byru.asia

Indonesia office : **PT. BYRU INDOTAMA**

Address : 50th Floor, Menara BCA Grand Indonesia
 Jakarta Indonesia 10301

Branch Address : Jalan Jend Sudirman No 121C Lantai, Pekanbaru, Riau, Indonesia



CORPORATE INFORMATION

Business Registration	:	1088988-D
Date of Incorporate	:	8 April 2013
Directors	:	Maamor Bin Masri Dicky Rinaldy Norazmi Bin Aziz
Shareholders	:	Wasilah Global Group Berhad Maamor Bin Masri Dicky Rinaldy Norazmi Bin Aziz
Authorised Capital	:	RM 5,000,000.00
Paid-up Capital	:	RM 2,000,000.00
Type of Business	:	Mineral Resources, Plantation, Mining, Investment
Principal Bank	:	Maybank Berhad (Equine Park Branch) CIMB Bank Bhd (Putrajaya Branch)
Account Type	:	Current Account
Account Number	:	Maybank Berhad - 562807526305 CIMB Bank Bhd - 8600314262 CIMB Bank Bhd - USD account: 80002258640
Company Secretary	:	LCS Secretar
Audit Company	:	Azwati Hanim & Co.

COMPANY OVERVIEW

BYRU GROUP INC. is a dynamic company incorporated in Malaysia and Indonesia with its main activities in trading a palm oil base product and tend to diversities into many international business venture.

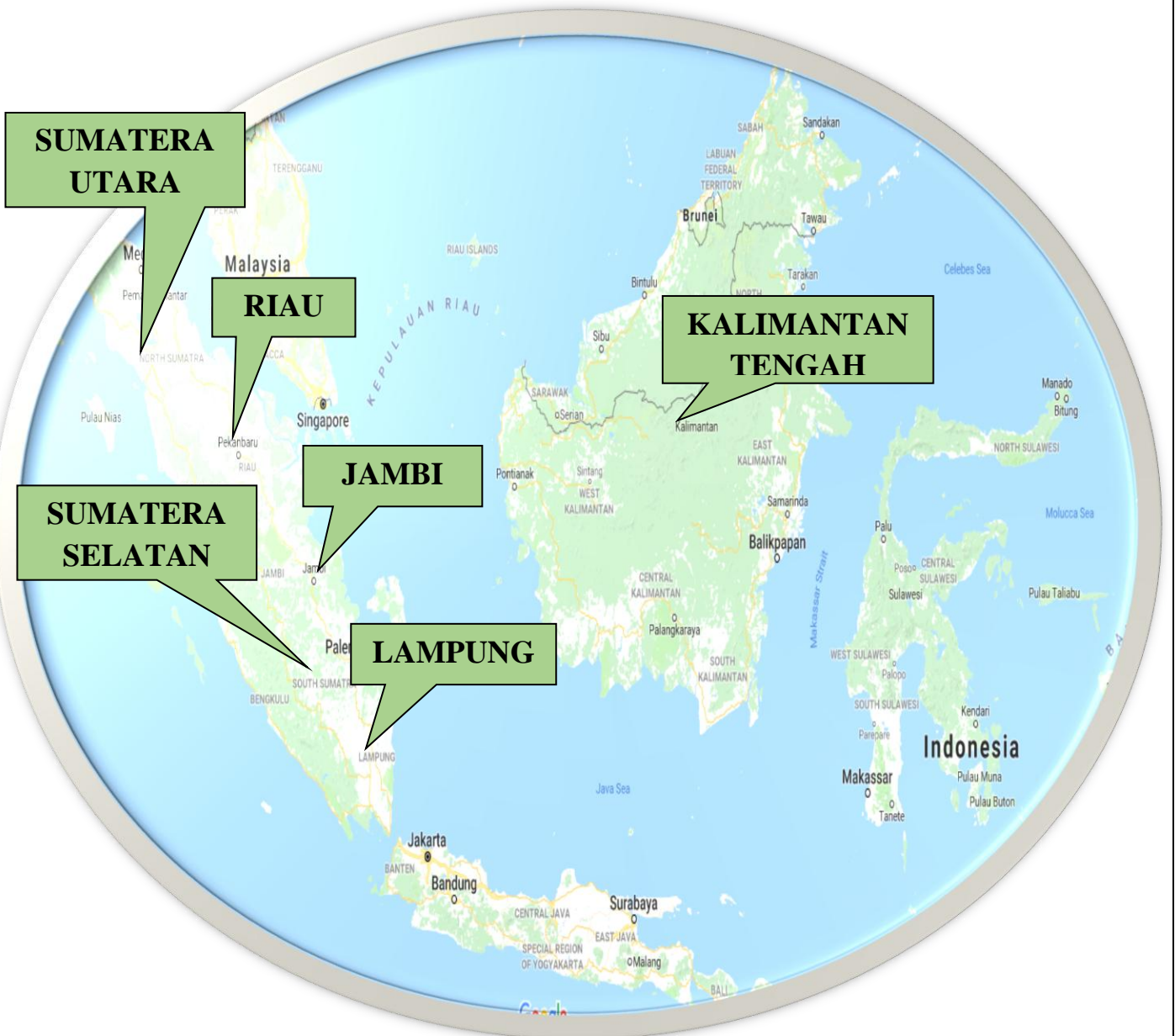
We have extensive worldwide business network with strategic trading partners and direct manufacturers providing a wide range of products from upstream and downstream palm oil product such as Crude Palm Oil, Processed Palm Oil, Palm Acid Oil, Palm Kernel Shell and Palm Kernel Expeller.

Our current established Partners and associate supply channel from more than 20 Palm Oil Mills in Indonesia and still increasing from further province. From the loading and filtered work, we have carry out our best to avoid impurities and moisture level; we are dedicated in working hand in hand with our current buyer and new buyer to promote bio energy for a better environment province Byru Group and its teritoring covered Riau, Sumatera Utara, Kalimantan Tengah, Jambi, Sumatera Selatan and Lampung.

Our facility at the stockpile is completed to serve more than 5,000 MT per week; our current availability is 20,000 MT per month bulk shipment FOB via several Ports in Indonesia.

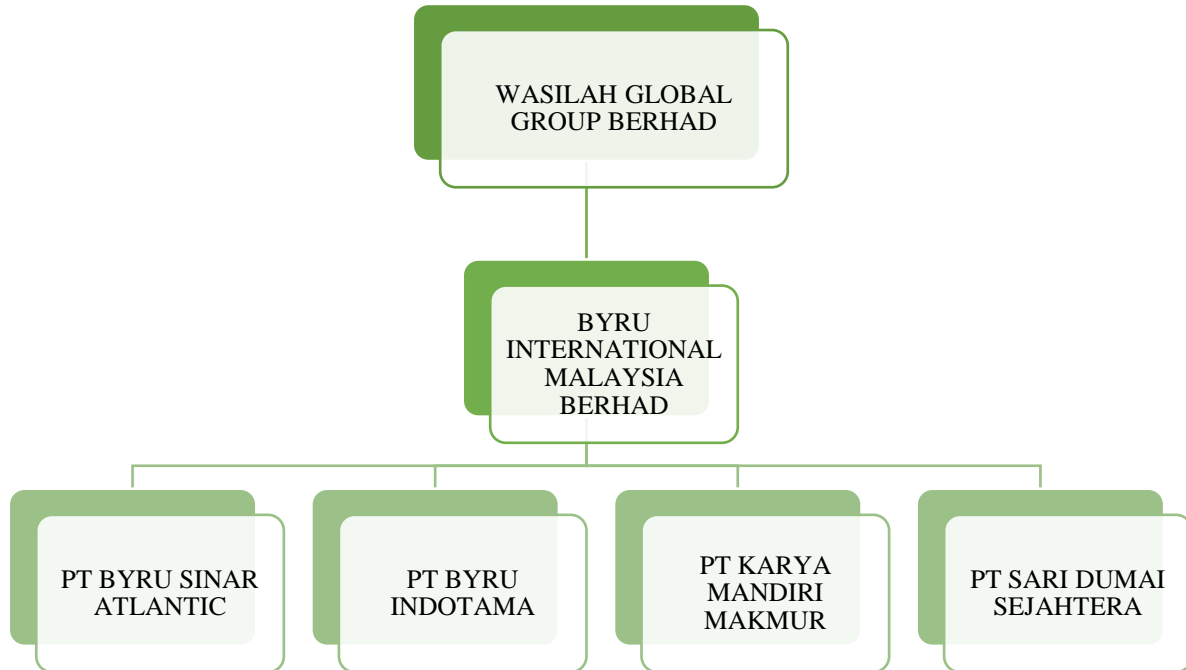
Byru Group well established in iron ore mining activities with local player, and has involved as well in Petroleum and Olio chemical based, Shipping and forwarding Engineering and Services it also boost our company growth and wealth to position us as one of the best leading company in South East Asia.

BYRU GROUP PROVINCE TERRITORY



THE ORGANISATION

Byru International Malaysia Berhad (BYRU) was incorporated in 2013. **BYRU GROUP** is a Public Limited company and a wholly owned subsidiary of **Wasilah Global Group Berhad**.



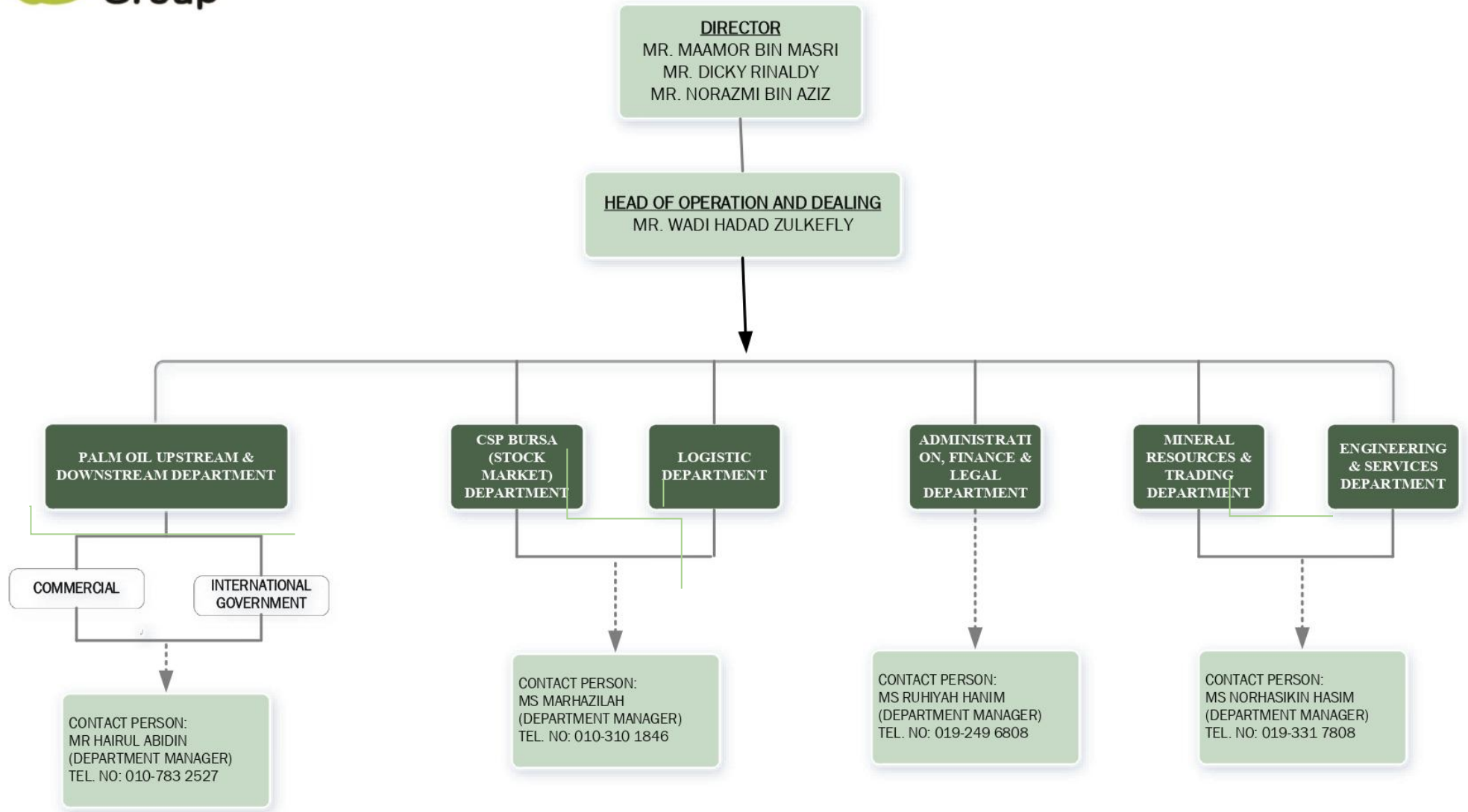
We at Byru International Malaysia Berhad expressly undertake in any of international business venture on behalf of the Group of Company. BYRU GROUP is entrusted to explore strategic international investment opportunities in new sector and new market. The Company aiming to manage international investment portfolio to realize its long-term potential, at the same time investing in what company believe would be future winners.

Our current investment presently focusing on palm oil plantation industries, palm oil base products & related, venturing minerals resources and mining activities.

We have established subsidiary companies in Indonesia namely PT. BYRU SINAR ATLANTIC, PT. BYRU INDOTAMA, PT. SARI DUMAI SEJAHTERA, and PT. KARYA MANDIRI MAKMUR and as part of BYRU GROUP.



ORGANISATION CHART OF BYRU INTERNATIONAL (M) BERHAD



VISION & MISSION STATEMENT

Our business is to continue to assertively build timely services while endeavoring to quickly progressive solution. To be leading internationally diversified integrated businesses.

CORE VALUES

Accountability;

We take ownership and deliver our commitment

Connected;

We embrace diversify and value individual qualities that allow us to make personal connection with our members and communities

High Expectation;

We continually strive to the best

Integrity;

We are sincere and uncompromising in our commitment to doing the right thing

Energize;

We bring a passion for business every day

Versatility;

We are adaptable to a changing environment and resilient during times of adversity

Enjoy What You Do;

We believe that having fun is essential to our success

OUR CORE BUSINESSES

PALM OIL INDUSTRY

The oil palm industry is a pillar of the Malaysian economy and plays a pivotal role in feeding and fuelling a growing global population. As the most versatile and productive oil crop, the oil palm has responded well to investments in research and technical promotion. Growth in the upstream sector has a cascading impact along the entire value chain, and MPOB as the custodian of the Malaysian oil palm industry continually places importance on R&D and services along the whole value spectrum. At the forefront of MPOB activities are issues of sustainable development and productivity. MPOB embraces multi-disciplinary strategies to maximize synergies between economic development and environmental stewardship, and ensure that future growth is carried out within a sustainable framework. It is engaged

- Crude Palm Oil (CPO)
- Process Palm Oil (PPO)
- Palm Acid Oil (PAO)
- Palm Kernel Shell (PKS)

STOCK MARKET TRADING

Commodity Supplying Participant – CSP for Bursa Malaysia (Kuala Lumpur Stock Exchange)

Bursa Suq Al-Sila' is a commodity trading platform specifically dedicated to facilitate Islamic liquidity management and financing by Islamic banks. Initiated as a national project, Bursa Suq Al-Sila' exhibits the collaboration of Bank Negara Malaysia (BNM), the Securities Commission Malaysia (SC), Bursa Malaysia Berhad (Bursa Malaysia) and the industry players in support of the Malaysia International Islamic Financial Centre (MIFFC) initiative.

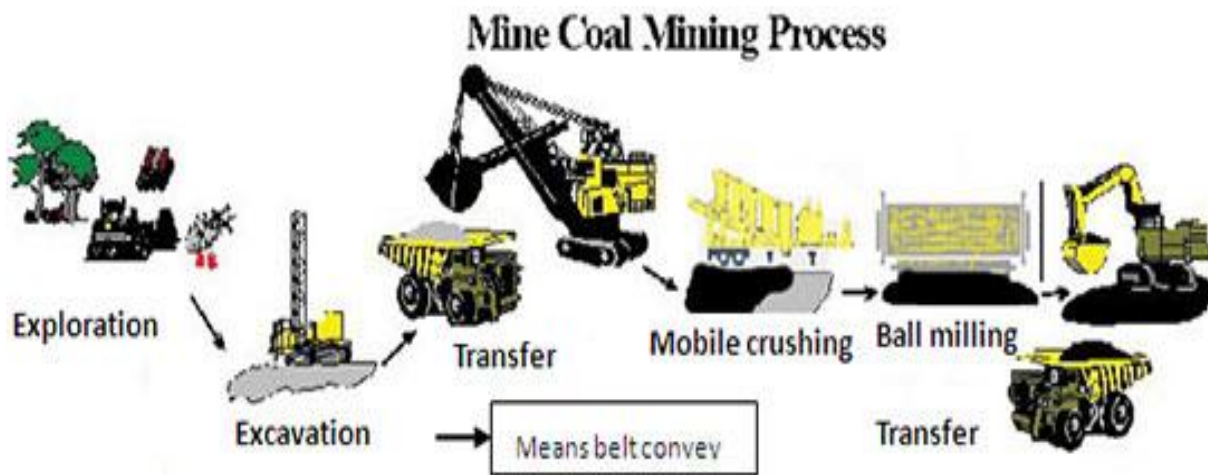
It receives close co-operation and strong support of the Ministry of Plantation Industries and Commodities through the Malaysian Palm Oil Board (MPOB), Malaysian Palm Oil Association (MPOA) and Malaysian Palm Oil Council (MPOC).

Since 2012 until today, BYRU is the member of CSP to Bursa Malaysia for the supply of CPO commodities in order to support the country to become the International Islamic financial hub.

OTHER BUSINESSES

COAL MINING

BYRU GROUP INC. is the first party of coal miner. We entered mining partnership in 2013. We provide coal and sell all kinds of calories and all the qualities that range from 4000 to 7500 kcal. We have specific data to mine our coal GCV, total moisture, total ash, sulphur, and so on. We lead and doing by the experienced and professional people who are expertise in coal mines starting from planning, construction and sales of our mining product. We have operations at four mine concessions under partnership scheme at Padang. Our coal is mainly supplied to China. We supply across Asia and we tend become one of the largest suppliers to our partner coal mining company.



IRON ORE MINING

BYRU GROUP INC. also known as mining company, entering mineral exploration and development activities focused on iron ore. Worldwide demand for steel will keep iron ore prices high and BYRU GROUP INC. is well positioned to benefit from the continued demand. Our team is comprised of skilled professionals with significant iron ore expertise to advance towards production. We own and manage mining and processing operations in West Sumatera. Our iron ore portfolio also extends to development projects in several cities in Indonesia.



GREEN PETROLEUM COKE

This coke is the product of the Coker unit in a crude oil refinery. The calcined petroleum coke is used to make anodes for the aluminums, steel and titanium smelting industry. The green coke must have sufficiently low metals content in order to be used as anode material.

Green petroleum coke is one of important energy substance with low sulfur and ash content. Being a good alternative energy source to replace Coal for customer or user who concern on stability of quality, high calorie demand, and environmental friendly.

Green petroleum coke is a residual product from petroleum oil refining process. A residual from a thermal cracking process which known as coking to produce lighter fuels. Under high-temperature process at 475 Celsius degree to 520 in a furnace, cracking process's produce light density product at the top and the most heavier products will remains at the bottom side. Byru Group able to undertake more than 6,000MT per month of Green Petroleum Coke.

REAL STATE AGENT (PROPERTIES)

We build long-term relationships with co partner especially in Sumatera Indonesia, which allow us to provide personalized, clear and considered advice on all areas of palm oil property in all key markets. We believe personal interaction is a crucial part of ensuring every client is matched to the property that suits their needs best and globally informed.



OWNERSHIP PROGRAMME

BYRU INTERNATIONAL (M) BERHAD (BIMB) is a public engaged in the oil palm plantation business, in particular, the development and subsequent management oil palm plantations.

BIMB has acquired to develop an oil palm plantation over approximately 5000 acres of land in Riau, Sumatera Indonesia and has designated 1170 acre area of this plantation programmed known as the Ownership Programme.

A total of 936 partner’s plot has been created with respect to the plantation. Each partner plot relates to a one (1) acre of Plantation. The Management Company will offer to the public for 80% of land acquired for first phase.

MALAYSIAN AGRICULTURE, HORTICULTURE & AGROTOURISM SHOW (MAHA) 2014



INTERNATIONAL PALM OIL CONGRESS AND EXHIBITION (PIPOC) 2015



BATA RINGAN MANUFACTURING PLANT**➤ CLC BRICKS**

This Byru Group CLC Bricks has entered into Bricks Technology and Manufacturing since 2015, the technology are using foam (microtubule) generated Foam Generator machine using raw materials Foam Agent diluted with water. The foam is mixed into the cement-sand dough during the stirring process with a special lightweight brick mixer. Drying is done only with aerated for 10 hours to be removed from the mold / molding brick and stored into place of hardening (curing area). This lightweight CLC brick can be used in construction after 20 days. This CLC technology is quite simple so investment is much cheaper than AAC technology. CLC technology is what we offer as an interesting investment today. Creating CLC rigid bricks is not something that is very difficult, but also not something that perfunctory so be. It takes carefulness in choosing materials, the form of dough when mixing, accuracy of the scales and patience and discipline.

Our capacity lightweight brick plant can produce 20m³ per day which equip to 44,200 pieces per months



ENGINEERING AND SERVICES

Byru Group has expanded and diversifies into many ventures which include Bricks Technology & Manufacturing, Engineering & Service and explore related to the industry internationally.



We are offering the industry scope such;

- Land reclamation
- Dredging
- Sand Supplies
- Marine equipment and vessels
- Mining engineering (Iron Ore, Gold) Operation
- Civil works and Housing Development

BYRU WORKING EXPERIENCE

COMPANY	DESCRIPTIONS	CLIENT & PARTNER
2017	Private Partnership to Supply and Distribute upstream and downstream Palm Oil Products, Palembang	<u>PT. Patisindo Sawit</u>
2017	Reclamation Project - Rencana Reklamasi and Pembangunan Kawasan Terpadu Kota Madiri and Pelabuhan Penumpang at Kecamatan Tebing and Kecamatan Karimun, Kabupaten Karimun, Provinsi Kepulauan Riau.	<u>Sinar Berkat Group & Rizq Engineering & Service Pte. Ltd</u>
2017	Proposal To Provision of Palm Oil Storage Tank and Free Trade Zone Development & Facilities, Lubuk Gaung, Dumai, Indonesia	<u>Individual & Kelompok Tani</u>
2017	To Supply 5000MT per Shipment and Commodity Crude Palm Oil (CPO)	<u>Keyser Technologies Pte Ltd</u>
2016	Proposal To Provision of Palm Oil Storage Tank and Free Trade Zone Development & Facilities, Dumai, Indonesia	<u>Pemerintah Kota Dumai</u>
2016	Importing and exporting fertilizer and agriculture product	<u>Maitha Intergrated Sdn Bhd & Transfertech Ltd</u>
2015	Private Partnership to Supply and Distribute upstream and downstream Palm Oil Products, Medan	<u>PT Perkebunan Nusantara III</u>
2015	Private Partnership to Supply and Distribute upstream and downstream Palm Oil Products, Medan	<u>PT Perkebunan Nusantara IV</u>
2015	Commodity Supplying Participant (CSP) of Bursa Malaysia Islamic Services Sdn. Bhd. (BMIS) (WASILAH GLOBAL GROUP BERHAD)	<u>Bursa Malaysia</u>

2015-2016	Real Estate Agent - Palm Oil Mills Properties Investment, Kabupaten Konawe Utara, Provinsi Sulawesi Utara. (20,000 Ha)	<u>PT. Selaras Andalan Jaya</u>
2015-2016	Real Estate Agent - Palm Oil Mills Properties Investment, Kabupaten Barito Selatan, Banjarmasin, Provinsi Kalimantan Selatan. (17,219 Ha)	<u>PT. Indo Sawit Jaya</u>
2015-2016	Real Estate Agent - Palm Oil Mills Properties Investment, Kabupaten Sijunjung, Provinsi Sumatera Barat. (5.646 Ha)	<u>PT. Angsana Agro Andalan</u>
2015-2016	Real Estate Agent - Palm Oil Mills Properties Investment, Kabupaten Bengkalis, Provinsi Riau. (1957.3 Ha)	<u>PT. Tumpuan</u>
2014	To Supply 30,000MT per Shipment and Commodity Iron Ore Crusshers	<u>China Worldwide Trading Limited (Jong Kong)</u>
2014	To Supply 30,000MT per Shipment and Commodity Iron Ore Crusshers	<u>Sinometal (Shanghai) Co. Ltd</u>
2014	Ownership Programme - Palm Oil Mills Properties Investment, Desa Sam-Sam, Kec. Kandis, Kabupaten Siak, Provinsi Riau. (50 Ha - 1000 Ha)	<u>JV with Individual Land</u>
2015	Ownership Programme - Palm Oil Mills Properties Investment, Kabupaten Sijunjung, Provinsi Sumatera Barat. (Kapasitas Pabrik 30 Ton TBS/Jam, Eks 40 Ton TBS/Jam)	<u>PT. Angsana Agro Andalan</u>
2014	Private Partnership to Supply and Distribute upstream and downstream Iron Ore, Kabupaten Solok, West Sumatera	<u>PT Pancasona Jaya Pratama</u>
2014	To Supply 500MT per Shipment and Commodity Palm Acid Oil (PAO)	<u>Suzhou Fuzhiyan Bio-Tech Co. Ltd</u>

2014	Private Partnership to Supply and Distribute upstream and downstream Palm Oil Products, Riau	<u>PT Perkebunan Nusantara V</u>
2013	Commodity Supplying Participant (CSP) of Bursa Malaysia Islamic Services Sdn. Bhd. (BMIS) (BYRU INTERNATIONAL (M) BERHAD)	<u>Bursa Malaysia</u>
2013	Private Partnership to Supply and Distribute upstream and downstream Palm Oil Products, Kalimantan	<u>PT Perintis Lintas Talang Duku</u>
2013	Private Partnership to Supply and Distribute upstream and downstream Palm Oil Products, Kalimantan	<u>PT. Mulya Sawit Agro Lestari</u>
2013	Private Partnership to Supply and Distribute upstream and downstream Palm Oil Products, Kalimantan	<u>PT. BW Planstation</u>
2013	Private Partnership to Supply and Distribute upstream and downstream Palm Oil Products, Kalimantan	<u>PT. Bumi Hutani Lestari</u>
2013	To Supply 30,000MT per Shipment and Commodity Iron Ore Crussers	<u>Trafigura Pte Ltd</u>
2009	To Supply 12000MT per Shipment and Commodity Crude Palm Oil (CPO)	<u>RFL Anstal Inc</u>

CERTIFICATES AND REGISTRATION



Our Ref: BMIS/CTP/04/2015

Private & Confidential

18 February 2015

WASILAH GLOBAL GROUP BERHAD

No. 33-2, Jalan 9/9C
Seksyen 9, Bandar Baru Bangi
43650 Bangi
Selangor

Attn : Nor Hafidzah Binti Mohamed
Vice President, Group Support Services

Dear Puan Nor Hafidzah,


**WASILAH GLOBAL GROUP BERHAD (WASILAH)
- APPLICATION FOR REGISTRATION AS COMMODITY SUPPLYING PARTICIPANT
(CSP) OF BURSA MALAYSIA ISLAMIC SERVICES SDN BHD (BMIS)**


Reference is made to your application dated 24 November 2014 regarding the above subject.

We are pleased to inform you that your application submitted pursuant to Rule 301 of the Rules of BMIS is successful and that WASILAH has been registered with BMIS as a CSP effective **16 February 2015** subject to the requirements of the Rules of BMIS.

Thank you.

Yours faithfully
for **BURSA MALAYSIA ISLAMIC SERVICES SDN BHD**


PASUPATHY VELAUTHAH
Head, Participants Supervision
Regulation


AHMAD SUFIAN MOKHTAR
Head, Participants Affairs
Regulation

Copy to : Director, Islamic and Alternative Markets
Islamic Markets

Bursa Malaysia Berhad 30632-P

15th Floor, Exchange Square | Tel : 03-2034 7000, 03-2732 4999 (GL)
Bukit Kewangan | Fax : 03-2026 3664
50200 Kuala Lumpur, Malaysia | Website : www.bursamalaysia.com

Borang MPOB L1



NO. LESEN : 584180017000

AKTA LEMBAGA MINYAK SAWIT MALAYSIA 1998

PERATURAN-PERATURAN
LEMBAGA MINYAK SAWIT MALAYSIA (PELESENAN) 2005

Menurut Peraturan-Peraturan Lembaga Minyak Sawit Malaysia (Pelesenan) 2005 dan tertakluk kepada syarat dalam atau yang dilampirkan atau dikenakan pada lesen ini, Lembaga dengan ini mengeluarkan lesen yang berikut itu kepada:

BYRU INTERNATIONAL (M) BERHAD (Pendaftaran: 1088988-D)

dari 87-1, JALAN EQUINE 9, EQUINE PARK BANDAR PUTRA PERMAI, SERI KEMBANGAN 43300 SELANGOR MALAYSIA

bagi

No.	Aktiviti Berlesen	Keluaran Kelapa Sawit
1	Menjual dan mengalih	CPO #
2	Membeli dan mengalih	CPO #

Bagi tempoh Satu (01) tahun bermula dari 01/05/2016 hingga 30/04/2017 termasuk kedua-dua tarikh di premis berlesen yang berikut :

87-1, JALAN EQUINE 9, EQUINE PARK BANDAR PUTRA PERMAI, SERI KEMBANGAN 43300 SEPANG SELANGOR

Daya Pemprosesan Yang Dibenarkan

tan metrik buah kelapa sawit setahun

Fi : RM200
Kategori : DL
Bertarikh : 21/04/2016

Datuk Dr. Choo Yuen May
Ketua Pengarah
Lembaga Minyak Sawit Malaysia

* Nota:

Keluaran Kelapa Sawit	Singkatan	Keluaran Kelapa Sawit	Singkatan
Buah Kelapa Sawit	FFB	Anak Benih Kelapa Sawit Dampada	SLGTISU
Isirung Sawit	PK	Tumbuh-Tumbuhan Daripada Tisu Kelapa Sawit	
Asid Lemak Sawit	FFA	Tumbuh-Tumbuhan Daripada Tisu Kelapa Sawit	FFOPT
Dieklina Sawit	PCM	Minyak Sawit	PO
Bungkai Isirung Sawit	PKC	Minyak sawit Mentah	CPO
Bahan Tanaman Kelapa Sawit	OPPM	Minyak Sawit Mentah Yang Diproseskan	PPO
Biji Benih Kelapa Sawit	SDS	Minyak Isirung Sawit Mentah	CPKO
Anak Benih Kelapa Sawit	SLG	Minyak Isirung Sawit Mentah Yang Diproseskan	PPKO
Anak Benih Kelapa Sawi Daripada Biji Benih Kelapa Sawit	SLGBUI	Minyak Sawit Keladak	SPO

No. Siri : 160061



SERTIFIKAT CLEAR AND CLEAN

Nomor : 284/Min/33A/2012

diberikan kepada

Nama : PT KARYA MANDIRI MAKMUR
 Alamat : Jl. Arif Rahman Hakim No. 23 Rt. 001 Rw. 004
 Kel. Belakang Pondok Kec. Padang Selatan
 Surat Keputusan : Bupati Solok, Sumatera Barat
 Nomor : 540-355-2010
 Tahap : Operasi Produksi
 Jenis Komoditas : Mineral Logam, Bijih Besi

Ditetapkan di Jakarta

pada tanggal : 13 Agustus 2012

Direktur Jenderal Mineral dan Batubara,



Dr. Ir. Thamrin Sihite, ME.



BUPATI SOLOK

KEPUTUSAN BUPATI SOLOK
 NOMOR : 540-287-2010

TENTANG

PERUBAHAN KUASA PERTAMBANGAN EKSPLOITASI (KW 04137MSM) MENJADI
 IZIN USAHA PERTAMBANGAN OPERASI PRODUKSI KEPADA
 PT. MINERAL SUKSES MAKMUR

BUPATI SOLOK,



BERLIN NADEAK, SH
NOTARIS
PEJABAT PEMBUAT AKTA TANAH
DAN
PEJABAT PEMBUAT AKTA KOPERASI

SK. MENTERI KEHAKIMAN RI
 NOMOR : C - 463.HT.03.01. TH 1999 TGL 24 PEBRUARI 1999
 SK MENTERI NEGARA AGRARIA / KEPALA BPN
 NOMOR : 14 - XI - 1998 TGL 31 AGUSTUS 1998
 SK. MENTERI NEGARA KOPERASI DAN UKM RI
 NOMOR : 86/Kep/M.KUKM/IX/2005 TGL. 23 SEPTEMBER 2005

W A A R M E R K I N G

~~AKTA~~ : PERJANJIAN KERJA SAMA DAN INVESTASI
 1. Tuan DICKY RINALDI.
 2. Tuan JIPRI BIN MOHD ARIS.
 NOMOR : 808/DAFTAR/II/2015.
 TANGGAL : 10 Pebrauri 2015.

JL. SULTAN SYARIF KASIM NO. 356 TELP. (0765) 31495
 D U M A I

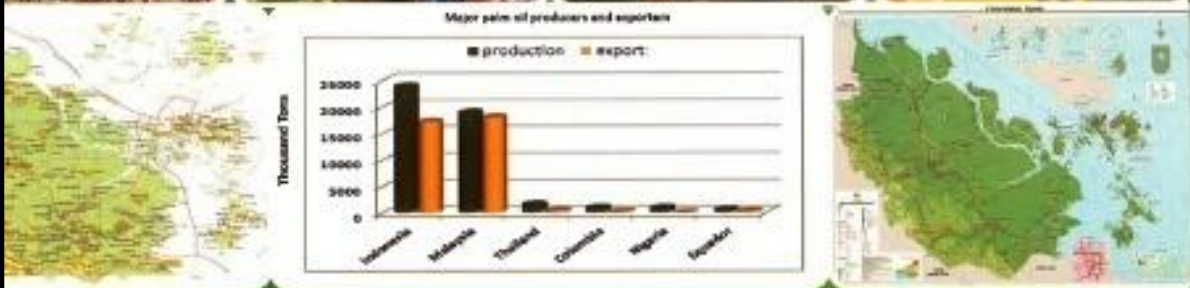


International (M)
Berhad 1088988-D

BYRU INTERNATIONAL (M) BERHAD

OWNERSHIP PROGRAMME

" YOU OWN , WE MANAGE "





3. Kerjasama dan pertimbangan pihak tuan di dalam perkara ini saya dahului dengan ucapan terima kasih.

Yang Benar,

SINAR BERKAT ENGINEERING & RESOURCES



Izhah Abd. Aziz b. Ishab Ali
CEO

Sinar Berkat Services & Supplier / Sinar Berkat Engineering & Resources
No 25 A, Jalan IKS BK1, Taman IKS Bukit Katil
Bukit Katil, 75450 Melaka
www.sinarberkat.com
admin@sinarberkat.com / decktux@gmail.com
+6 013 650 7770 / +6 019 6580761

DOWNSTREAM PRODUCTS

1. Neutralised Palm Oil		
* FFA (As Palmitic)		0.25% max
M&I		0.1% max.
I.V (Wijs)		50-55
+ M.Pt degrees C (AOCS Cc 3-25)		33-39
2. Neutralised & Bleached Palm Oil		
* FFA (As Palmitic)		0.25% max.
M&I		0.1% max.
I.V (Wijs)		50-55
+ M.Pt degrees C (AOCS Cc 3-25)		33-39
# Colour (5 1/4" Lovibond cell)		20 Red max.
3. Refined, Bleached & Deodorised (RBD) / Neutralised, Bleached & Deodorised (NBD) Palm Oil		
* FFA (As Palmitic)		0.1% max.
M&I		0.1% max.
I.V (Wijs)		50-55
+ M.Pt degrees C (AOCS Cc 3-25)		33-39
# Colour (5 1/4" Lovibond cell)		3 Red max.
4. Crude Palm Olein		
* FFA (As Palmitic)		5.0% max
M&I		0.25% max.
I.V (Wijs)		56 min.
+ M.Pt degrees C (AOCS Cc 3-25)		24 max.
5. Neutralised Palm Olein		
* FFA (As Palmitic)		0.25% max.
M&I		0.1% max.
I.V (Wijs)		56 min.
+ M.Pt degrees C (AOCS Cc 3-25)		24 max.
6. Neutralised & Bleached Palm Olein		
* FFA (As Palmitic)		0.25% max.
M&I		0.1% max.
I.V (Wijs)		56 min.
+ M.Pt degrees C (AOCS Cc 3-25)		24 max.
# Colour (5 1/4" Lovibond cell)		20 Red max

7. Refined, Bleached & Deodorised (RBD) / Neutralised, Bleached & Deodorised (NBD) Palm Olein		
* FFA (As Palmitic)		0.1% max.
M&I		0.1% max.
I.V (Wijs)		56 min.
+ M.Pt degrees C (AOCS Cc 3-25)		24 max.
# Colour (5 1/4" Lovibond cell)		3 Red max.
8. Crude Palm Stearin		
* FFA (As Palmitic)		5.0% max.
M&I		0.25% max.
I.V (Wijs)		48 max.
+ M.Pt degrees C (AOCS Cc 3-25)		44 min.
9. Neutralised Palm Stearin		
* FFA (As Palmitic)		0.25% max.
M&I		0.15% max.
I.V (Wijs)		48 max.
+ M.Pt degrees C (AOCS Cc 3-25)		44 min.
10. Neutralised & Bleached Palm Stearin		
* FFA (As Palmitic)		0.25% max.
M&I		0.15% max.
I.V (Wijs)		48 max.
+ M.Pt degrees C (AOCS Cc 3-25)		44 min.
# Colour (5 1/4" Lovibond cell)		20 Red max.
11. Refined, Bleached & Deodorised (RBD) / Neutralised, Bleached & Deodorised (NBD) Palm Stearin		
* FFA (As Palmitic)		0.2% max.
M&I		0.15% max.
I.V (Wijs)		48 max.
+ M.Pt degrees C (AOCS Cc 3-25)		44 min.
# Colour (5 1/4" Lovibond cell)		3 Red max.
12. Palm Acid Oil		
Total Fatty Matter		95% min. (basic 97%)
M & I		3.0% max.
* FFA (As Palmitic)		50% min.
13. Palm Fatty Acid Distillate		
Saponifiable Matter		95% min. (basic 97%)
M&I		1.0% max.
* FFA (As Palmitic)		70% min.

Note:

- + : Slip Point, Softening Point or Rising Point
- * : Molecular Weight of Palmitic Acid is taken as 256
- # : Color measurement based on Tintometer Model 'E' AF 900 and Model 'D' AF 702.
- : Specifications for palm steerin depend on the process used
- : Specifications are shipped quality final

Offer of RBD Oil



PT. RIMBO PANJANG SUMBER MAKMUR

PERKEBUNAN & PABRIK KELAPA SAWIT

Jl. Simpang Empat Manggopoh, Padang Kadok Jorong Bandua Balai
Nagari Kinali Kecamatan Kinali Kabupaten Pasaman Barat Kode Pos 26367

Jakarta, 22 November 2017

No : 0822/RPSM-HO/XI/2017

Hal : Surat Penawaran Pembelian Product Crude Palm Oil

Dengan hormat,

Menjawab surat No. 01/CPO-PDG/RPSM/DIMB/XI-2017 tertanggal, 18 November 2017, kami dari pihak PT. Rimbo Panjang Sumber Makmur mengucapkan banyak terima kasih atas penawaran yang Bapak/ ibu ajukan, dan kami memberikan syarat-syarat sbb:

1. Spesifikasi :
 - FFA : 5.00 % Max
 - M & I : 0.50 % Max
 - DOBI : 2 Min
2. Quantity 3.000 Ton yang ditawarkan itu untuk duration berapa lama ?, batch per 200 Ton
3. Harga yang kami kehendaki adalah mengacu pada salah satu harga standart KPB / Dumai / Belawan
4. Syarat dan tempat pengiriman : FOB [tangki timbun] Teluk Bayur
5. Term Of Payment :
 - Down Payment (DP) 75 % pada saat pembukaan kontrak
 - Pelunasan max 2 hari setelah penerimaan


Demikianlah kami sampaikan dan menjadi maklum, atas perhatian dan kerjasamanya kami mengucapkan banyak terima kasih.

Hormat kami

PT. Rimbo Panjang Sumber Makmur



Edy Chandra
Direktur

	PT. INCASI RAYA	
	Certificate of Analysis	No. Dok : FRM.QCL.02.16 Rev. : 01 Tgl Efektif : 01 Januari 2015 Halaman : 01 dari 01

No :78/IREO/EXT-LAB/X/2017

Kepada Yth:
PT. JAPFA
 di
 Duku Padang

Bersama ini kami menyatakan bahwa mobil berikut :

No. Polisi : BA 9124 ZU
 Tanggal : 10 Oktober 2017
 Jam muat : 09³⁰ WIB


Mengangkut komoditas **RBD Olein** dengan kualitas sebagai berikut :

Parameter	Kualitas Aktual	Standar Kualitas
Cloud Point	9.2 °C	< 10 °C
Iodin Value	57.084	Min 56
Free Fatty Acid	0.050%	Max. 0.10 %
Moisture & Impurities	0.047%	Max. 0.15 %


Demikianlah pernyataan ini kami keluarkan dengan sebenar-benarnya untuk dapat dipergunakan sesuai keperluan.

Padang, 10 Oktober 2017

Diketahui Oleh ,


Ir. Subianto
 Manager Refinery

Dibuat Oleh,


Misa Ginting
 Ka. Labor